



# BLACK BONE

HIGH PRESSURE LAMINATE

"DRAW YOUR IMAGINATION"

## Concepts

Welcome to Backbone Masonry :

Blackbone is a lifestyle brand focusing on high-pressure laminates and innovative designs.

Drawing inspiration from "Draw Your Imagination," our products empower you to create your dream spaces.

We offer a multitude of possibilities to fuel your design imagination.

Furthermore, we are committed to environmental responsibility.

Our eco-friendly practices ensure that not only can our customers create beautiful spaces,

but they can also do so with a clear conscience. Additionally, our focus on product texture

allows you to experience the natural feel of our materials for an even deeper connection to your design.

## About Us

We are a distributor of HPL Laminate, and our factory has now been certified by both Singapore and European standards.

Driven by this commitment to quality, we strive to help Thai people access high-quality HPL Laminate at reasonable prices. As a company, we stand alongside the carpentry industry in Thailand supporting their growth as co-workers.

## CONTACT

T: 090-916-6291, 066-150-4664

FACEBOOK : BLACKBONE MASONRY

LINE OFFICIAL : @blackbone

E-MAIL : blackbonemasonry@gmail.com

**SCAN ME!**



## What is high pressure laminate ?

The raw materials include Kraft, printed decorative and overlay papers, and thermosetting synthetic resins. Kraft paper is the core material and determines the product thickness. The decorative paper determines the design and color, while the overlay paper improves the resistance of materials regarding abrasion, scratch and heat.

## Why HPL?

HPL offers higher impact resistance than other laminates, and has proven itself over 75 years of use in commercial and residential applications.

## Where is HPL used?

Commercial and residential cabinet casework, doors and drawer fronts – offices, hotels, healthcare  
Worktops, tabletops, kitchen counters

Retail displays, transaction counters, shelves, walls

Architectural wall panels, elevator cab wall panels

Signage and branded surfaces (with digitally printed and silk-screened designs)

Laminate flooring

In combination with TFL, lightweight papers, and 3DL with matching or complementary designs

Applications where you want a design that's not available in any other material.



## **The reasons why people should choose substitute materials over real wood or stone :**

### **Sustainability:**

- **Environmental impact :** Real wood and stone extraction can contribute to deforestation, habitat loss, and resource depletion. Substitute materials made from recycled content, fast-growing plants, or sustainably managed resources can have a significantly lower environmental footprint.
- **Reduced carbon footprint :** Producing traditional materials like wood and stone often involves energy-intensive processes, leading to higher greenhouse gas emissions. Substituting with materials that require less energy or emit fewer greenhouse gases can help combat climate change.

### **Performance and durability:**

- **Lower maintenance :** Substitute materials, require less maintenance than their natural counterparts. They resist weathering, warping, or staining better, leading to cost and time savings.
- **Wider range of properties :** Engineered materials tailored to possess specific properties, such as fire resistance, strength, or flexibility, that may not be readily available in natural wood or stone.

### **Cost and availability:**

- **Affordability :** Substitutes often cost less, especially if the natural materials are rare or high-quality. This reason make them more accessible option for budget-conscious projects.
- **Uniformity and consistency :** Manufactured substitutes offer greater consistency in terms of color, texture, and grain patterns, which can be desirable for a clean and modern aesthetic.
- **Readily available :** Natural wood and stone may be regionally limited or subject to supply chain disruptions. Substitute materials can offer more reliable and readily available source for construction or design projects.

### **Aesthetics and design:**

- **Modern and versatile :** Many substitute materials come in a wide range of colors, textures, and finishes, offering greater design flexibility. This allows for the creation of unique and contemporary looks.
- **Lightweight and flexible :** Certain substitutes, lighter and more flexible than traditional materials, making them ideal for specific applications like furniture or wall panels.
- **Hygienic and easy to clean :** Materials, like HPL, are non-porous and easier to clean than natural stone, making them a good choice for areas with hygiene concerns.

Ultimately, the decision of whether to use a substitute material over real wood or stone depends on a variety of factors and individual preferences. Weighing the potential benefits in terms of sustainability, performance, cost, and aesthetics can help you make an informed choice for your specific project or needs.

## Our Product: Concern for The Green World

In a world grappling with the stark realities of climate change, the responsibility of sustainability weighs heavily on every industry. Our company, deeply aware of this critical juncture, recognizes that our products do not exist in a vacuum. It is with this understanding that we approach every aspect of our production, driven by a steadfast commitment to "Concern for The green world."

This concern manifests in the very DNA of our product.

We meticulously scrutinize every stage of the lifecycle, from raw material sourcing to final disposal, seeking out and prioritizing eco-friendly alternatives. We forge partnerships with suppliers who share our values, ensuring responsible extraction and processing of resources.

We embrace innovation, dedicating resources to the development of biodegradable or upcycled materials, reducing our reliance on virgin resources. Transparency is key, and we readily share details about our environmental footprint, inviting scrutiny and open dialogue with our customers.



"The love for all living creatures is the most noble attribute of man."  
Charles Darwin





# WOODGRAINS

WE BRING THE FOREST CLOSER TO YOU.



BBWYA-0344



BBWNT-0372



BBWNT-0577



BBWKR-0702



BBWYM-0703



BBWNG-0394

"The most beautiful things are always simple." – Martha Stewart



A

B

C

D

E

1



BBWYT-0425

BBWD-0255

BBWYA-0583

BBWNG-0842

BBWNG-0781

2



BBWKR-0437

BBWLM-0186

BBWLM-0707

BBWWL-4184

BBWNT-0813

3



BBWNT-0379

BBWNT-0391

BBWYT-0095

BBWWL-4154

BBWNT-0489

8

Standard Size 1220 x 2440 mm / 0.8 mm



A

B

C

D

E



BBWYT-0004



BBWNT-0867




BBWLM-0441



BBWYA-0581



BBWNG-0861



"I believe your home tells a story about who you are and who you aspire to be."  
Nate Berkus



A

B

C

D

E

1

BBWLM-0244

BBWSW-0708

BBWNT-0709

BBWLM-0447

BBWNT-0415

2

BBWKR-0178

BBWLM-0272

BBWNT-0318

BBWYT-0048

BBWYT-0359

3

BBWNT-0393

BBWNT-0053

BBWNT-0392

BBWNG-0312

BBWNG-0243



A

B

C

1



BBWYT-0074

BBWLM-0405

2



BBWNT-0192



BBWNT-0705



BBWKR-0439

3

OUT  
OF  
STOCK

BBWCF-0181

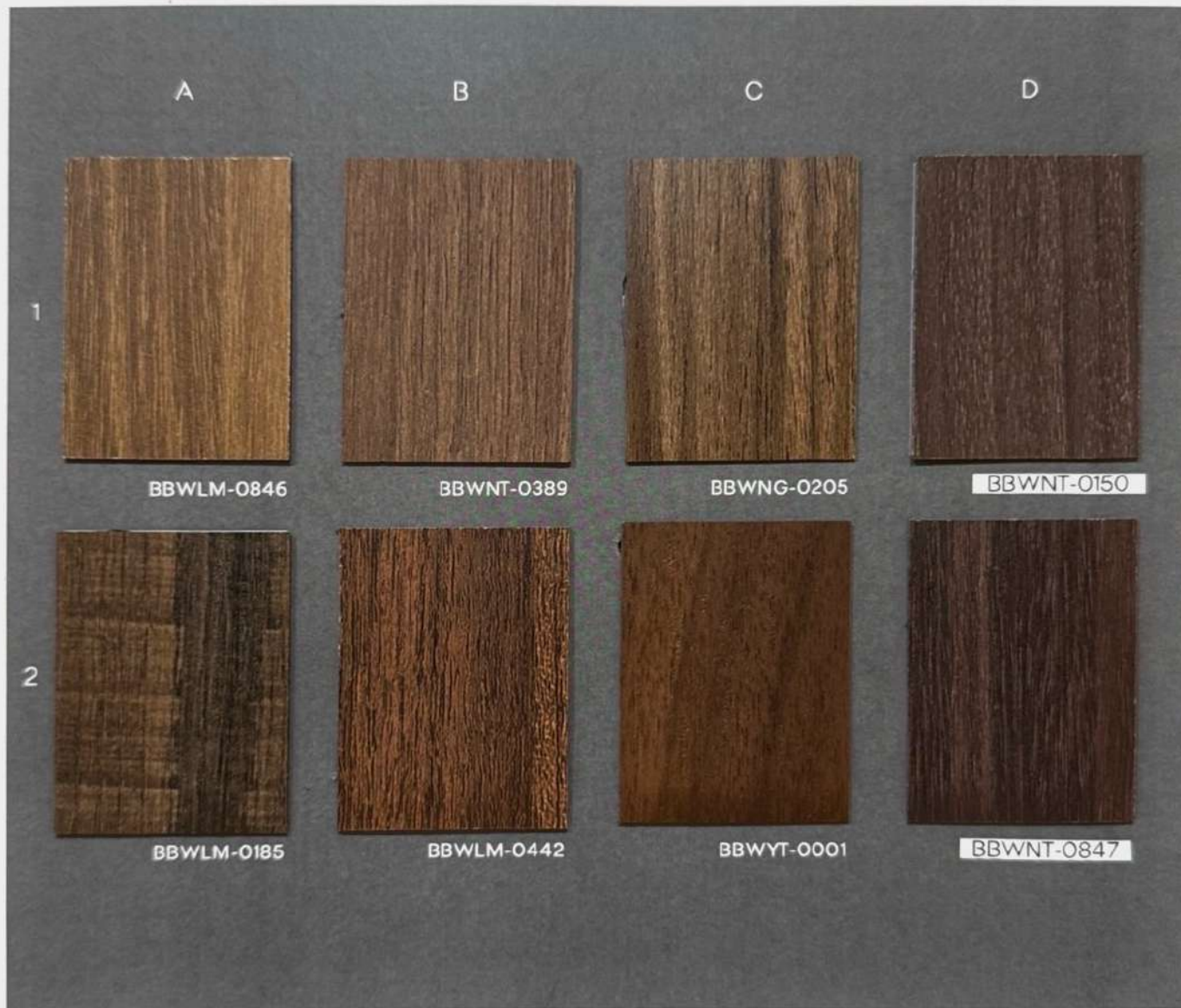


BBWKR-0701



BBWKR-0704

Standard Size 1220 x 2440 mm / 0.8 mm





"Simplicity is the keynote to all true elegance."  
- Coco Chanel

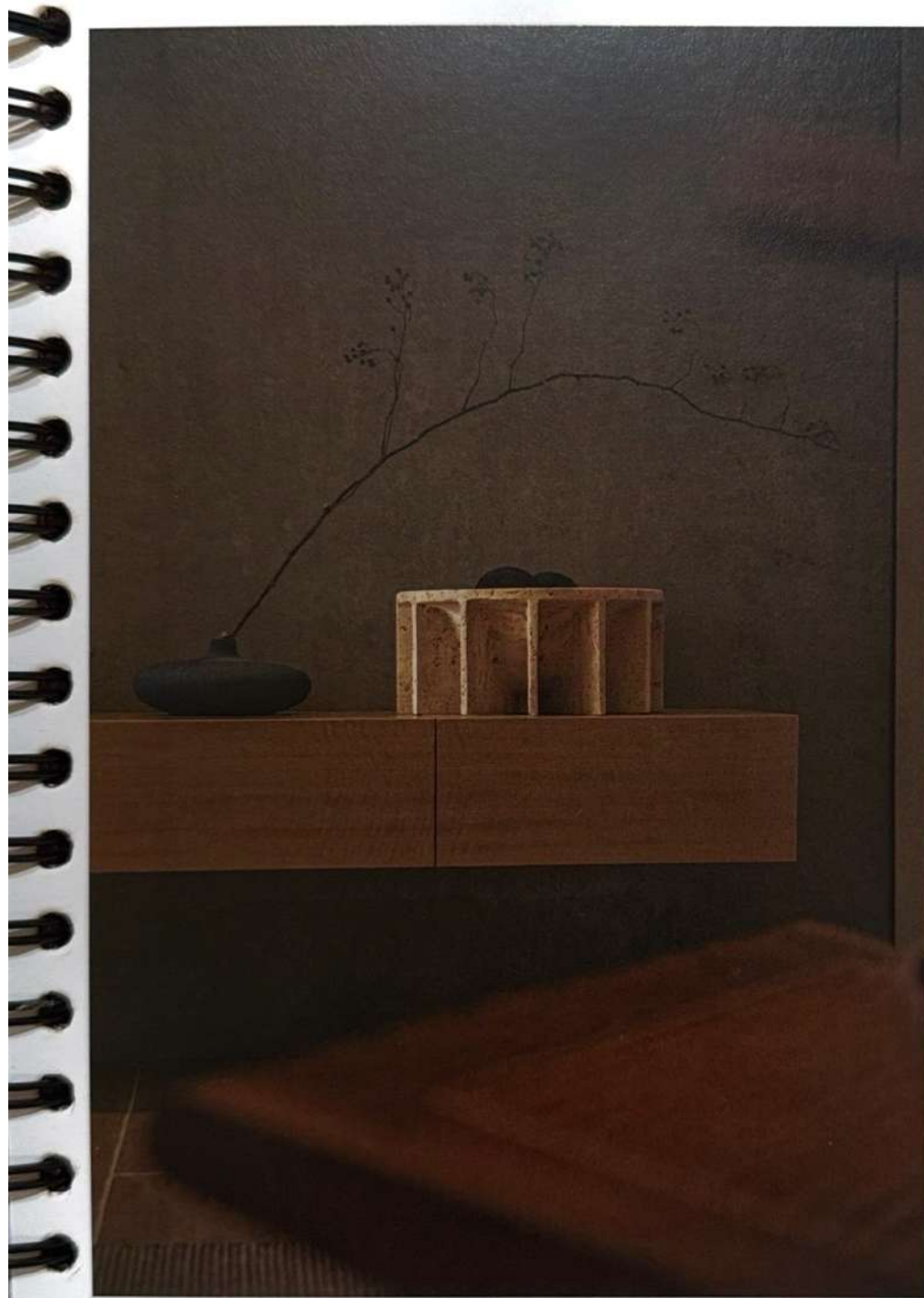




# Shibui

(adjective) Japanese

particular aesthetic of simple,  
subtle and unobtrusive beauty.



A

1



BBWAC-4058

2



BBWAC-4075

3



BBWAC-4027

A

B

C

1



BBWAC-4016



BBWAC-4009



BBWAC-2034

2



BBWAC-4042



BBWAC-4048



BBWAC-4044



A



BBWAC-4025

B



BBWAC-4007

1



BBWAC-4038

2



BBWAC-2022

3



BBWAC-4012



First, concept  
Then, design.

# JAPANESE WOODS

Architecture is some kind of frame of nature.





A

B

C

D

1

2

BBWNT-0843

BBWNT-0844

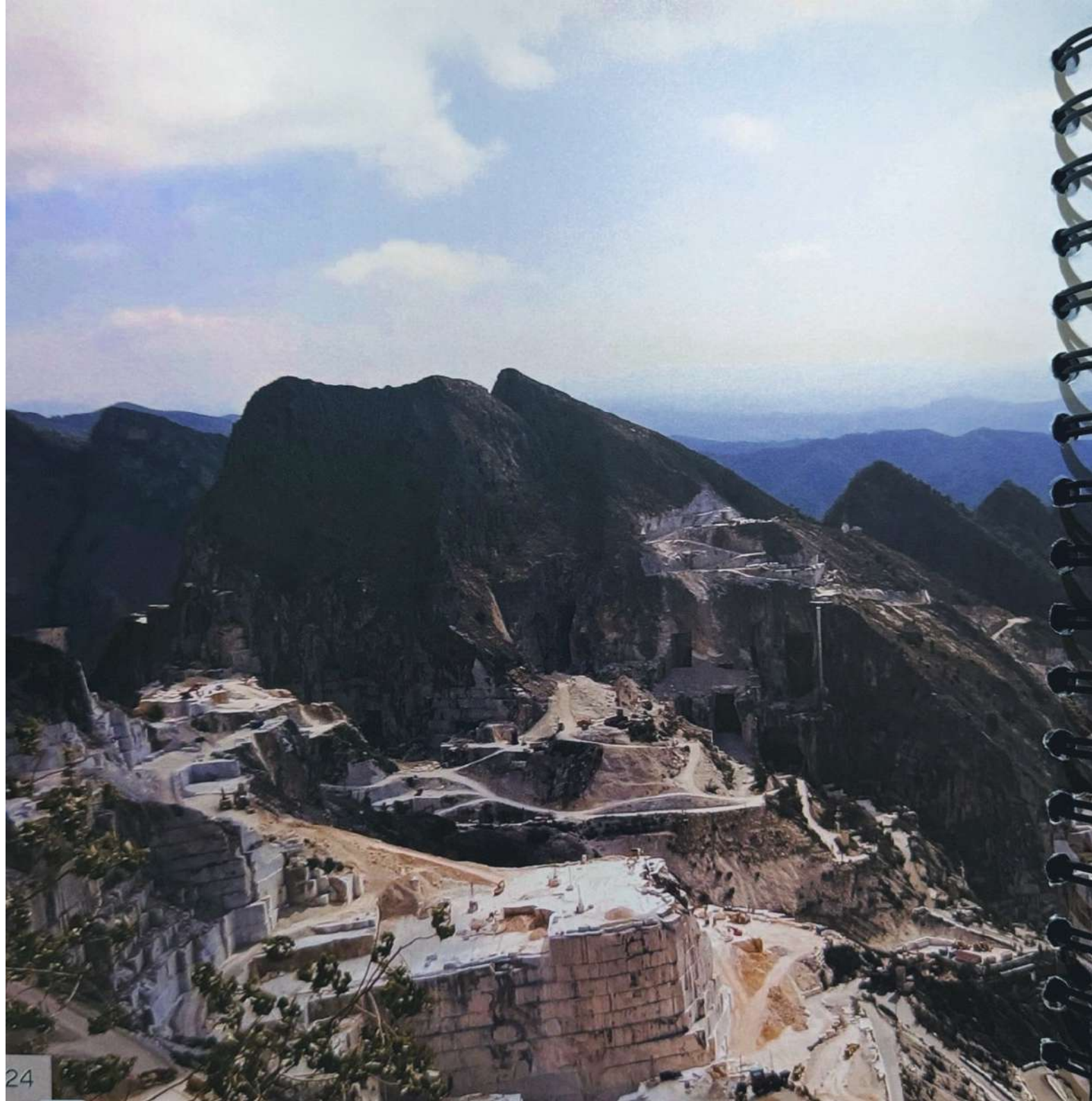
BBWD-0244

BBWS-4118

BBWNT-0866

BBWNT-0214

BBWNG-0506



A panoramic view of a mountain valley. In the foreground, there are rocky, terraced slopes. In the middle ground, a town is visible in a valley. In the background, there are more mountains and a body of water under a clear sky. A semi-transparent text box is overlaid on the upper right portion of the image.

# STONES

THE DETAILS ARE NOT THE DETAILS,  
THEY MAKE THE DESIGN

# Luxury Marble



BBHG-3331



BBHG-3337

FULL SHEET



**BBHG-1476**  
Luxury Black Marble

**Size**  
1220 x 2440 mm  
Thickness 0.8 mm.

FULL SHEET



**BBHG-0460**  
Luxury White Marble

**Size**  
1220 x 2440 mm  
Thickness 0.8 mm.

FULL SHEET



**BBHG-6124**  
Rocley Black

**Size**  
1220 x 2440 mm  
Thickness 0.8 mm.

FULL SHEET



**BBHG-6122**  
Rocley Gray

**Size**  
1220 x 2440 mm  
Thickness 0.8 mm.



**BBM-8782**  
High Voltage Black | Size 1220 x 2440 mm.  
Thickness 0.8 mm



**BBM-8051**  
Pycnogenol Marble | Size 1220 x 2440 mm.  
Thickness 0.8 mm



**BBS-8433**  
Black Waving | Size 1220 x 2440 mm.  
Thickness 0.8 mm



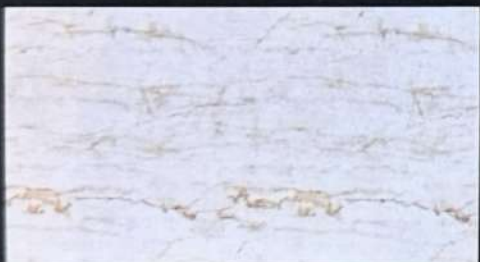
**BBM-7730**  
White Feather | Size 1220 x 2440 mm.  
Thickness 0.8 mm



**BBHG-8341**  
White Line | Size 1220 x 2440 mm.  
Thickness 0.8 mm



**BBST-1006**  
Luxury White Fossil | Size 1220 x 2440 mm.  
Thickness 0.8 mm



**BBHG-2062**  
Blanco Ibiza White | Size 1220 x 2440 mm.  
Thickness 0.8 mm



**BBHG-8300**  
Maze Black | Size 1220 x 2440 mm.  
Thickness 0.8 mm



**BBHG-2761**  
White Volakas | Size 1220 x 2440 mm.  
Thickness 0.8 mm

# Elemental

FULL SHEET LAMINATE



BBHG-8839  
Lighting White Marble

Size  
1220 x 2440 mm.  
Thickness 0.8 mm.



BBC-3476  
Classic Gold Marble

Size  
1220 x 2440 mm.  
Thickness 0.8 mm



BBHG-8369  
Lighting Black Marble

Size  
1220 x 2440 mm.  
Thickness 0.8 mm.



BBHG-9842  
Luxury Gold Marble

Size  
1220 x 2440 mm.  
Thickness 0.8 mm.



BBHG-9885  
Synatic White Marble

Size  
1220 x 2440 mm.  
Thickness 0.8 mm.

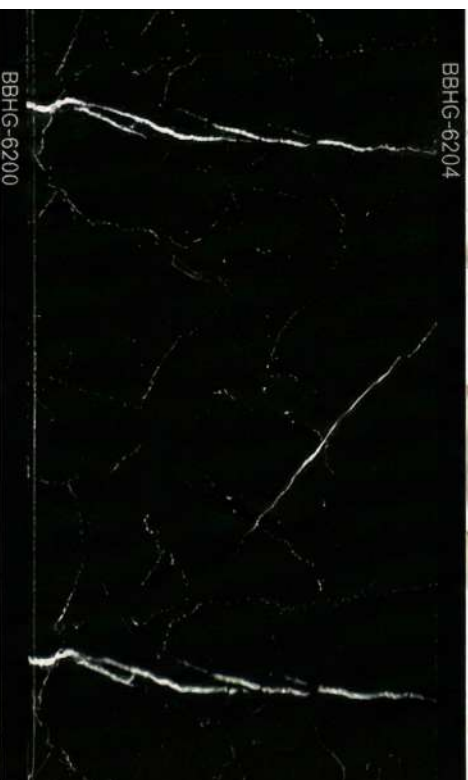


BBHG-2969  
Dusty White Marble

Size  
1220 x 2440 mm.  
Thickness 0.8 mm.



BBHG-6200



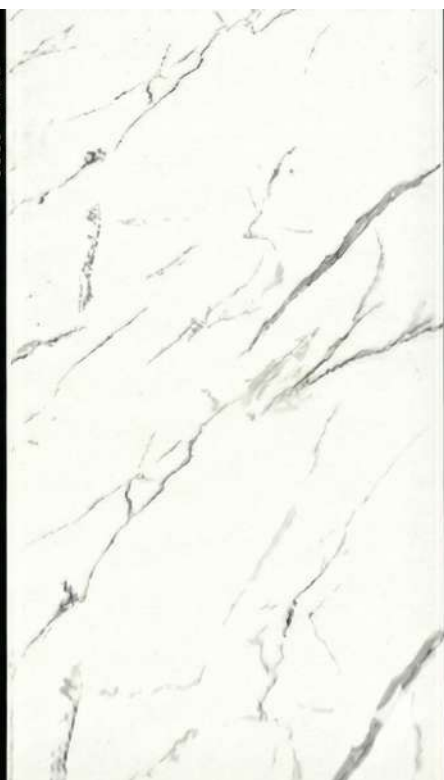
BBHG-6204



BBHG-6206



BBHG-6206



BBHG-8186

BBHG-6001



BBHG-6202



BBS-6201



BBS-6203



BBHG-6205

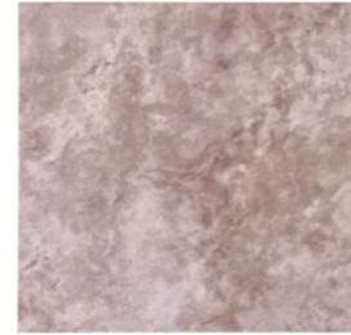


# Concrete



BBC-5252  
Cigarette Smoke Concrete

Size  
1220 x 2440 mm.  
Thickness 0.8 mm



BBC-8317  
Charcoal Grey Concrete

Size  
1220 x 2440 mm.  
Thickness 0.8 mm



BBC-91083  
Fossil Concrete

Size  
1220 x 2440 mm.  
Thickness 0.8 mm



BBHN-1830  
Tadao Concrete

Size  
1220 x 2440 mm.  
Thickness 0.8 mm



# Concrete

FULL SHEET LAMINATE



**BBAC-5013**  
Vacuum Concrete | Size  
1220 x 2440 mm.  
Thickness 0.8 mm.



**BBAC-5011**  
Plain Concrete | Size  
1220 x 2440 mm.  
Thickness 0.8 mm.



**BBAC-5012**  
Asphalt Concrete | Size  
1220 x 2440 mm.  
Thickness 0.8 mm.



**BBC-8886**  
Lightweight Concrete

Size  
1220 x 2440 mm.  
Thickness 0.8 mm



**BBC-8192**  
Pervious Concrete

Size  
1220 x 2440 mm.  
Thickness 0.8 mm



**BBC-1329**  
Mir Concrete

Size  
1220 x 2440 mm.  
Thickness 0.8 mm



**BBK-1369**  
Ambuja Concrete

Size  
1220 x 2440 mm.  
Thickness 0.8 mm



**BBKR-8033**  
Shotcrete concrete

Size  
1220 x 2440 mm.  
Thickness 0.8 mm



**BBST-9521**  
Limecrete concrete

Size  
1220 x 2440 mm.  
Thickness 0.8 mm

# Waving

FULL SHEET LAMINATE



BBS-8557  
White La Cascata



BBHG-8559  
Black La Cascata



BBS-8558  
Gray La Cascata



BBHG-8558  
Gray La Cascata



BBHG-8557  
White La Cascata



BBHG-1321  
Black Atrium

Size  
1220 x 2440 mm.  
Thickness 0.8 mm



BBHG-1320  
Gray Atrium

Size  
1220 x 2440 mm.  
Thickness 0.8 mm



BBHG-1319  
Light Atrium

Size  
1220 x 2440 mm.  
Thickness 0.8 mm



BBHG-1318  
White Atrium

Size  
1220 x 2440 mm.  
Thickness 0.8 mm

# Atrium

# Rust

FULLSHEET PATTERN



**BBKR-8035**  
Yellow Rust

Size  
1220 x 2440 mm.  
Thickness 0.8 mm.



**BBCK-9211**  
Brown Rust

Size  
1220 x 2440 mm.  
Thickness 0.8 mm.



**BBKR-5454**  
Red Rust

Size  
1220 x 2440 mm.  
Thickness 0.8 mm.

# Terrazzo



**BBY-8252**  
Sun Braker

Size  
1220 x 2440 mm.  
Thickness 0.8 mm



**BBY-8253**  
Wintersun

Size  
1220 x 2440 mm.  
Thickness 0.8 mm



**BBYQ-8181**  
Chalky

Size  
1220 x 2440 mm.  
Thickness 0.8 mm



**BBYQ-8182**  
High Cloud

Size  
1220 x 2440 mm.  
Thickness 0.8 mm



**BBY-8185**  
The Reven

Size  
1220 x 2440 mm.  
Thickness 0.8 mm

FULL SHEET LAMINATE

# BOOKMATCH



BBNL-1092S



BBNL-1422S

# BOOKMATCH



BBNL-4046



BBNL-4047



BBNL-4051



BBNL-9220

# ARTERY BOOKMATCH



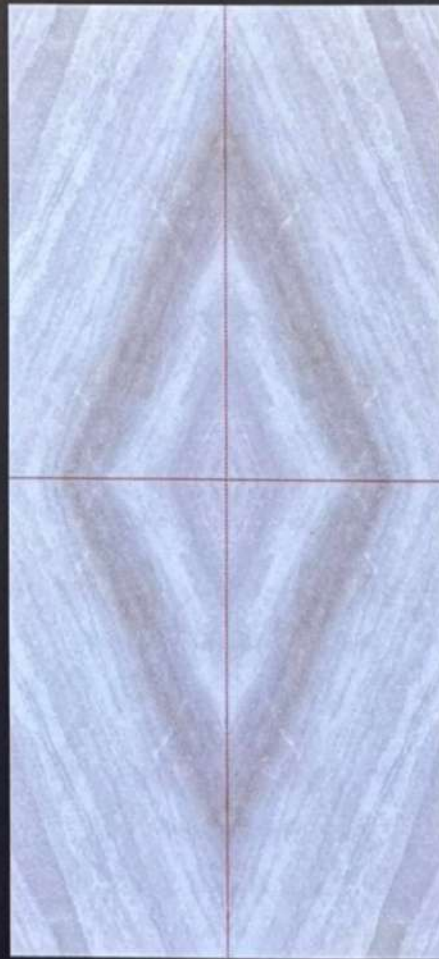
BBNL-149

BBNL-149

# BOOKMATCH



BBNL-9408

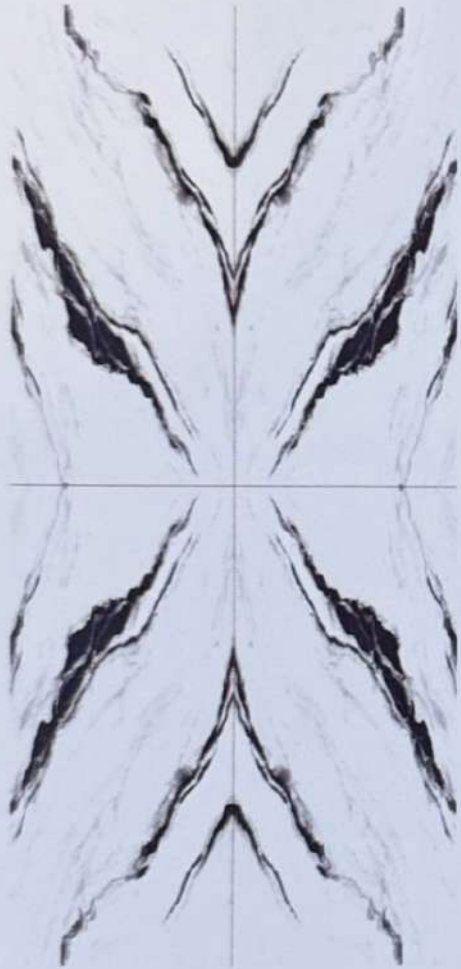


BBNL-9409



BBNL-6446

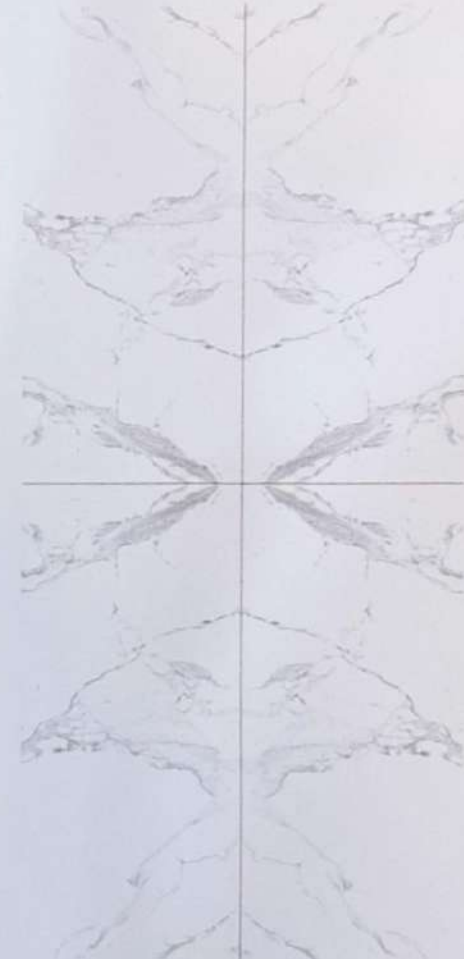
# BOOKMATCH



BBNL-1422



BBNL-9407



BBNL-2864

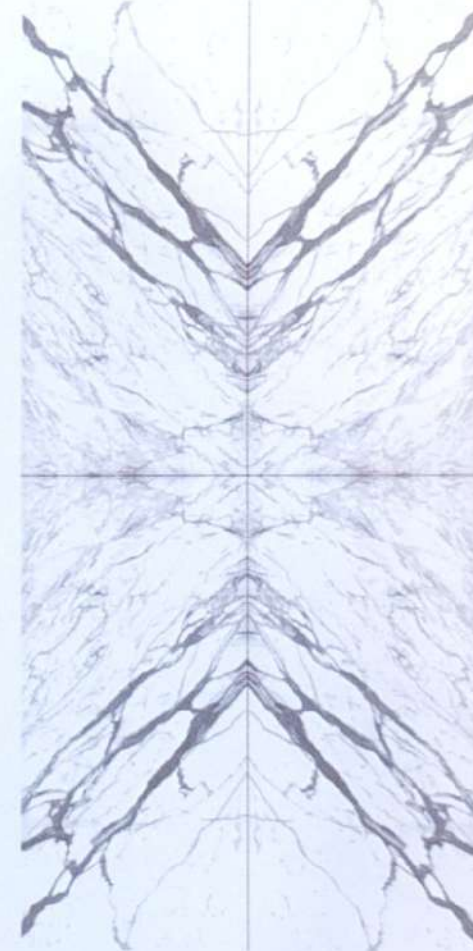
# BOOKMATCH



BBNL-6193

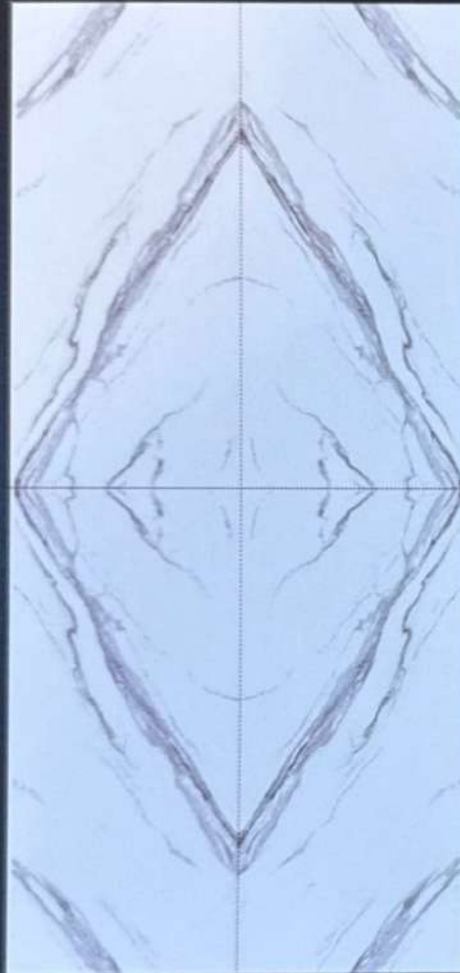


BBNL-149B



BBNL-1331

# BOOKMATCH



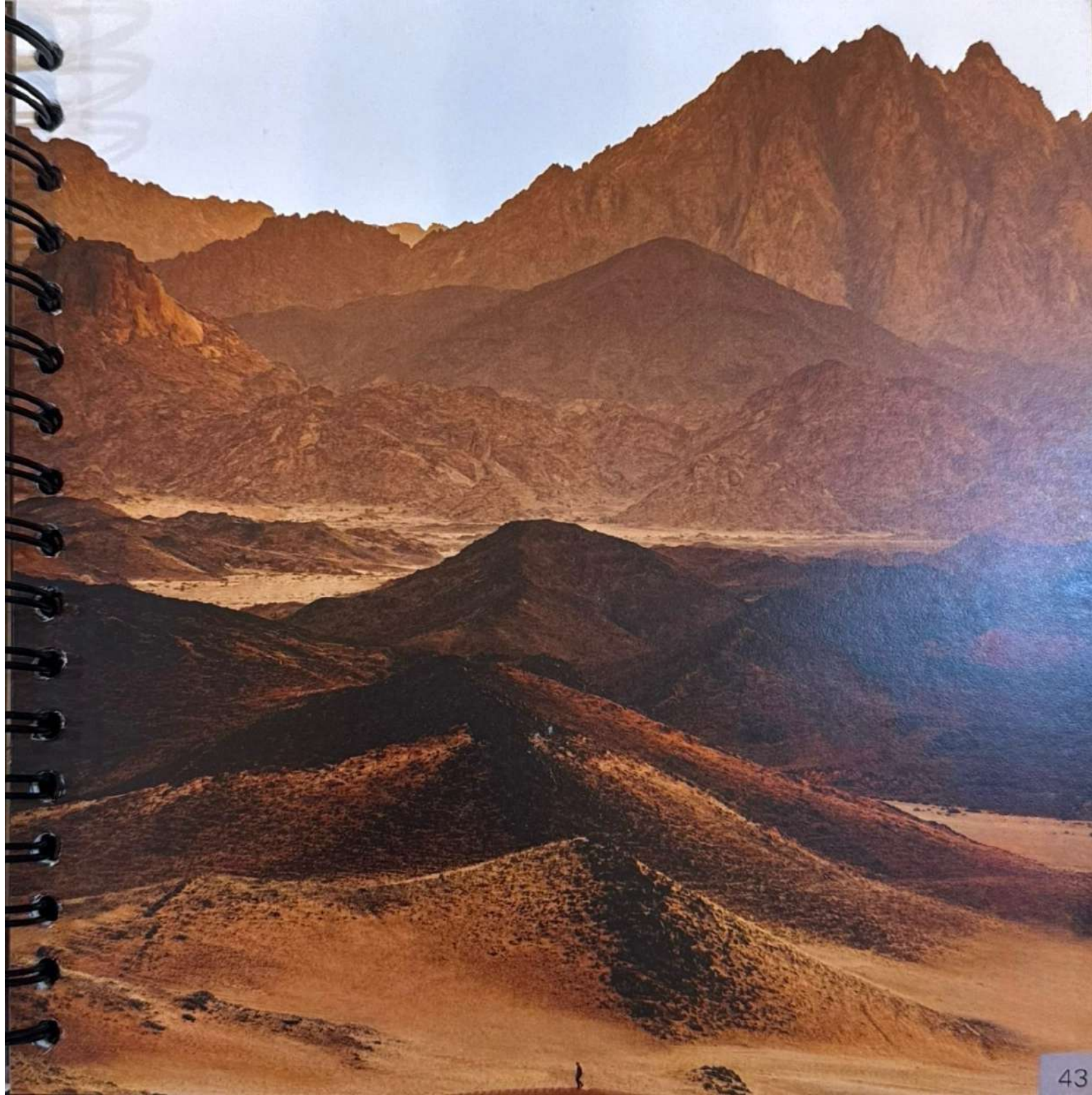
BBNL-0134



BBNL-1351



BNL-9094



# FABRICS

THIS IS AN EXCITING TIME FOR TEXTILES.

A

B

1 BBF-9532

BBF-9339

A

B

BBF-9337



BBF-9338 1



BBF-7721



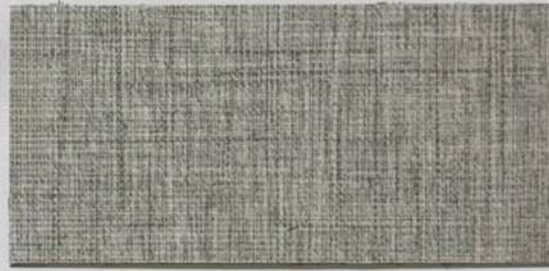
BBF-7722 2



BBF-9444



BBF-7733 3



BBF-9445



BBF-9446 4



BBF-7039



BBF-7318 5



# METALLICS

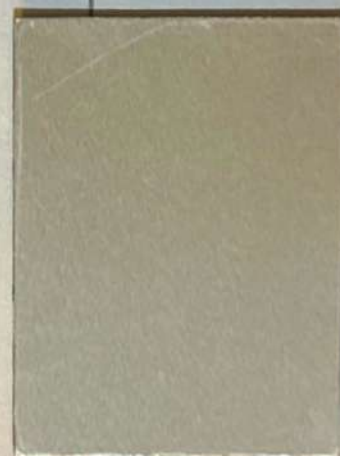
IT'S ALL METAL, BUT ON THE INSIDE IT'S VERY DELICATE.

A



BBMT-8207

B



BBMT-8206



\* Mirror Aluminiums are available in stock.

# BLACKS

MY FAVORITE COLOUR IS BLACK.

A

B

C

D

E

1



BBWYC-0909



BBC-0909



BBSD-0909



BBF-0909



BBY-0909

2



BBL-0909



BBSF-0909



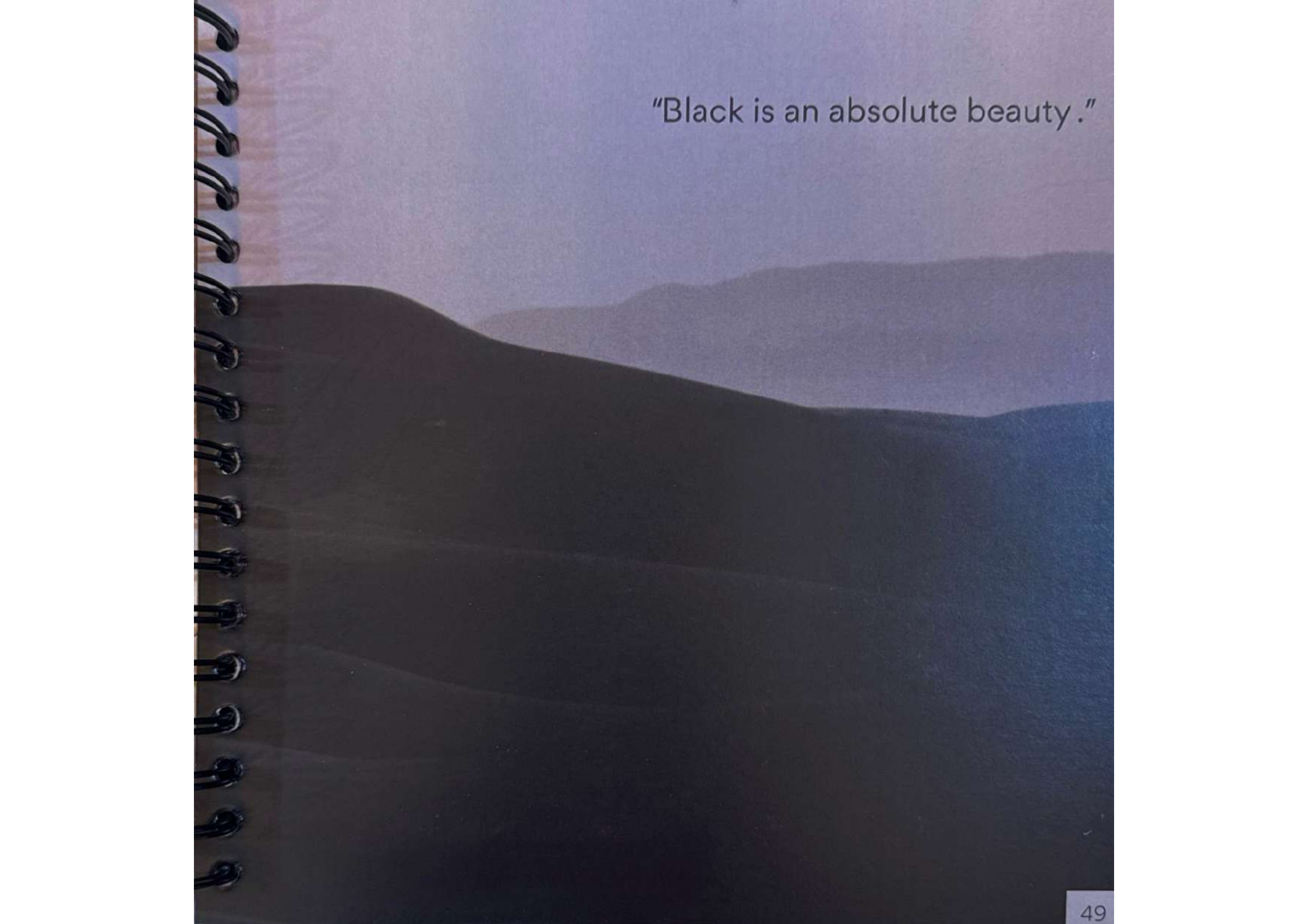
BBWNG-0909



BBWNT-0909



BBWD-0909



"Black is an absolute beauty."

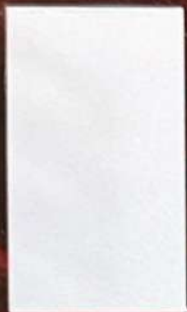


# SOLID COLORS

LIVE A CONLORFUL LIFE.

A B C D E F

1



BBM-0949



BBHG-0949



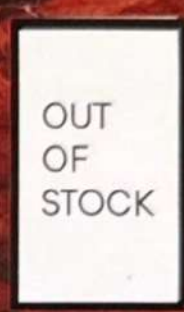
BBM-3200



BBHG-3200



BBS-3200



BBM-1339

2



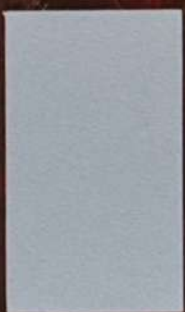
BBM-0923



BBM-0933



BBHG-0933



BBM-1200



BBM-0459



BBM-2124

3



BBHG-7157



BBSD-7157



BBHG-7197



BBM-7197



BBM-0823



BBM-1332





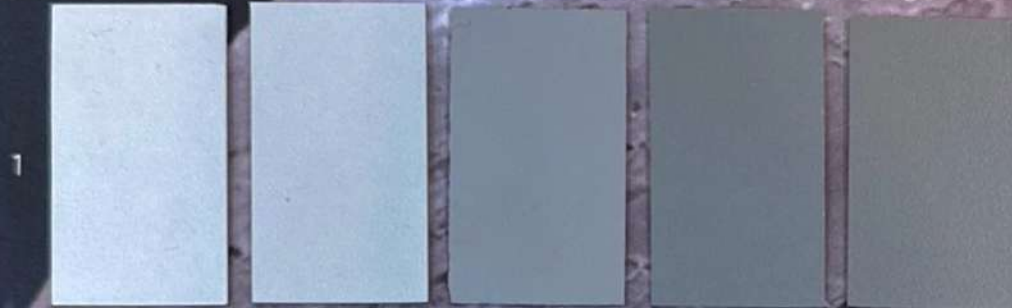
The simplest things are often the truest. - Richard Bach



Nature always wears the colors of the spirit.

- Ralph Waldo Emerson

A B C D E F G

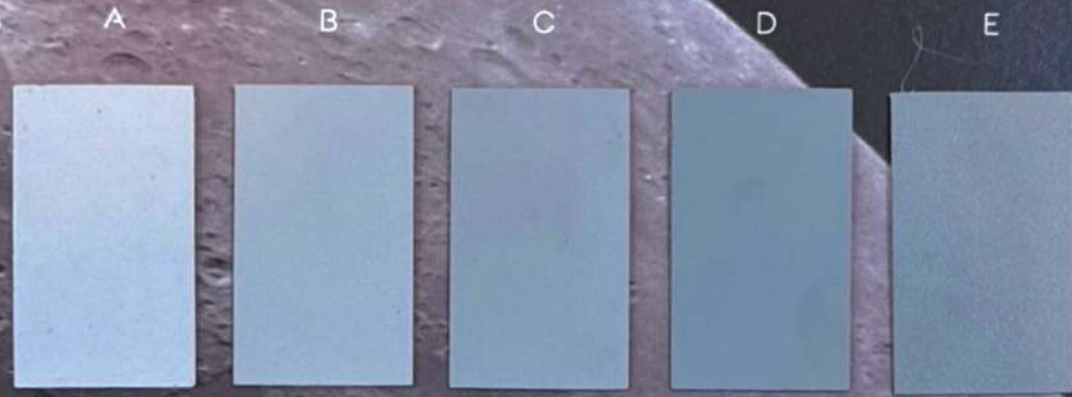


BBM-0927 BBM-1201 BBM-2020 BBM-1300 BBM-1097

2



BBHG-1109 BBHG-1200 BBHG-1201 BBHG-1110 BBHG-0928 BBHG-1300 BBHG-1301



BBM-1109

BBM-1110

BBM-1122

BBS-0928

BBM-0928

1



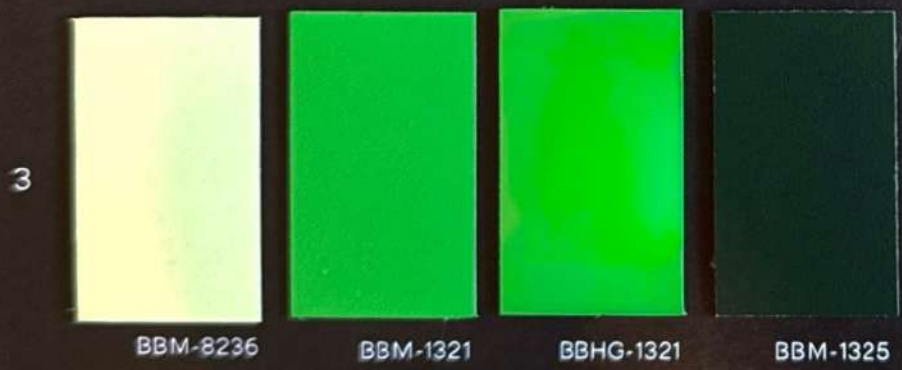
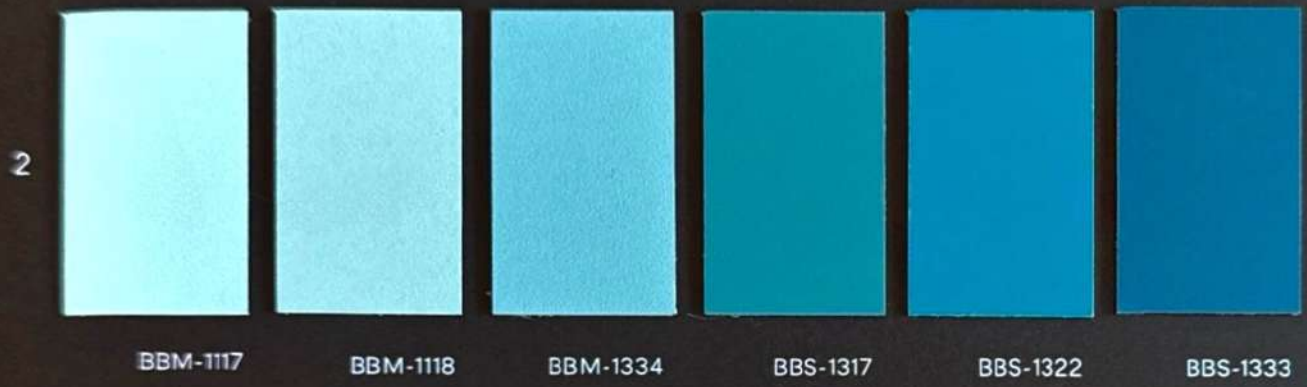
BBM-0912

BBS-0806

BBM-0806

BBM-1301

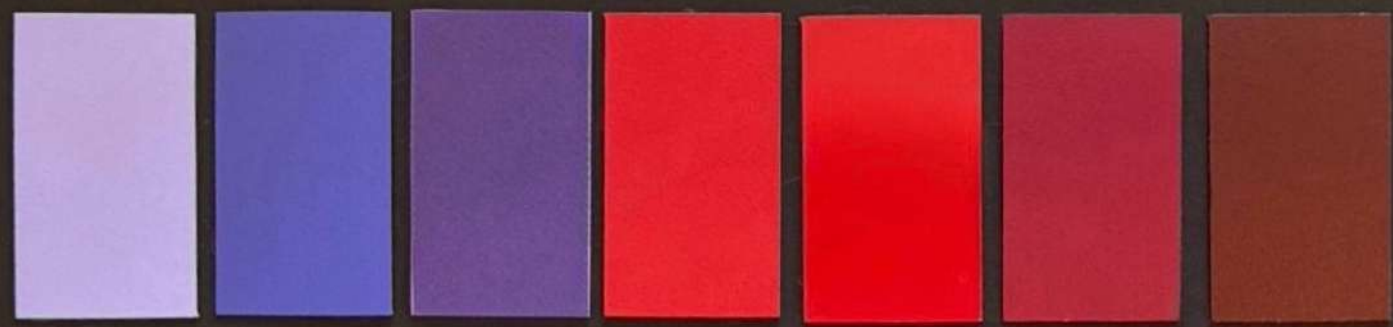
2





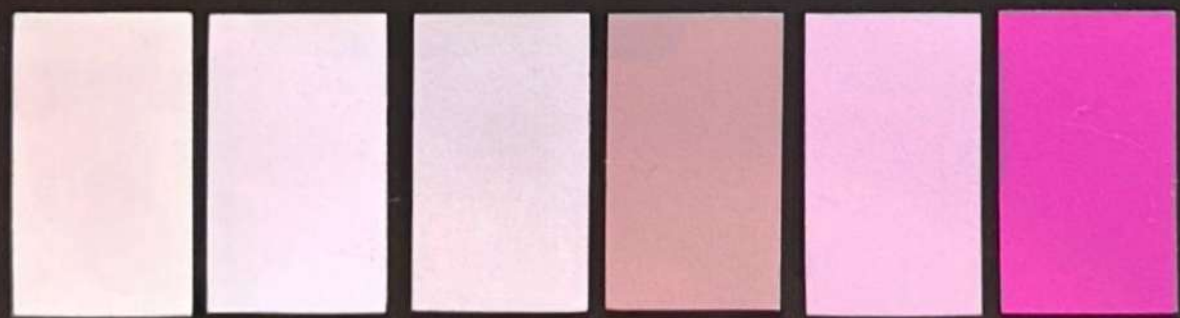
1

BBM-1112    BBM-1113    BBM-1303    BBHG-1303    BBM-1207    BBHG-1207



2

BBM-1214    BBM-1309    BBM-1319    BBM-5048    BBHG-5048    BBM-1307    BBM-1308



3

BBD-5491    BBD-3001    BBM-8858    BBM-8238    BBM-1115    BBM-1601

# INDEX

## WOODGRAINS

Item Code	Page	Row	Surface
0001	13	C2	WYT
0013	22	A1	WNG
0048	11	D2	WYT
0053	11	B3	WNT
0074	12	B1	WYT
0093	14	A1	WYT
0095	8	C3	WYT
0164	22	B2	WNT
0178	11	A2	WKR
0181	12	A3	WCF
0185	13	A2	WLM
0186	8	B2	WLM
BBWNT-0847	13	D2	WNG
0192	12	A2	WNT
0205	13	C1	WNG
0214	23	C2	WNT
0243	11	E3	WNG
0244	11	A1	WLM
0244	23	D1	WD
0255	8	B1	WD
0272	11	B2	WLM
0312	11	D3	WNG
0318	11	C2	WN
0344	6	A1	WYA
BBWAC-0255	22	B1	WNG
0364	14	C1	WNG
0372	6	B1	WNT
0379	8	A3	WNT
0389	13	B1	WNT
0391	8	B3	WNT
0392	11	C3	WNT
0393	11	A3	WNT
0394	6	C2	WNG
0405	12	C1	WKR
0412	22	A2	WNG
0415	11	E1	WNT
0425	8	A1	WYT
0437	8	A2	WKR
0439	12	C2	WKR
0441	9	C1	WLM
0442	13	B2	WLM
0447	11	D1	WLM
0489	8	E3	WNT
0506	23	D2	WNG
0577	6	C1	WNT
0578	22	C1	WNT
0581	9	D1	WYA
0583	8	C1	WYA

Item Code	Page	Row	Surface
0701	12	B3	WKR
0702	6	A2	WKR
0703	6	B2	WYM
0704	12	C3	WKR
0705	12	B2	WNT
0707	8	C2	WLM
0708	11	B1	WSW
0709	11	C1	WNT
0781	8	E1	WNG
0813	8	E2	WNT
0842	8	D1	WNG
0843	23	B1	WNT
0844	23	C1	WNT
0846	13	A1	WKR
0848	14	D2	WNT
0861	9	E1	WNG
BBWYT-0004	9	A1	WW
0866	23	B2	WNT
0867	9	B1	WNT
0874	14	B1	WNT
BBWNT-0150	13	D1	WNG
BBWNT-0706	22	C2	WNT
0967	14	C2	WNT
BBWYT-0359	11	E2	WYT
2022	20	B2	WAC
2043	18	C1	WAC
4003	14	D3	WAC
4007	20	B1	WAC
4009	18	B1	WAC
4012	20	A3	WAC
4016	18	A1	WAC
4025	20	A1	WAC
4027	17	A3	WAC
4038	20	A2	WAC
4042	18	A2	WAC
4044	18	C2	WAC
4048	18	B2	WAC
4054	14	C3	WAC
4058	17	A1	WAC
4075	17	A2	WAC
4103	22	D1	WLT
4118	23	A1	WS
4154	8	D3	WWL
4184	8	D2	WWL
7836	14	B2	WWW
8612	14	A2	WWW

## STONES

Item Code	Page	Row	Surface
0460	26	-	HG
0582	41	-	HG
1006	27	-	M,HG,ST
1034	42	-	HG
1092S	36	-	HG
1259	40	-	HG
1318	33	-	HG
1319	33	-	HG
1320	33	-	HG
1321	33	-	HG
1329	31	-	C
1351	42	-	HG
1369	31	-	K
1422	40	-	HG
1422S	36	-	HG
1476	26	-	M,HG,HG
149	38	-	HG
149B	41	-	HG
1830	29	-	HN
2062	27	-	HG
2761	27	-	M,HG
2969	28	-	HG
3331	26	-	HG
3337	26	-	HG
3476	28	-	HG,HN,C
4046	37	-	HG
4047	37	-	HG
4051	37	-	HG
5011	30	-	AC
5012	30	-	AC
5013	30	-	AC
5252	29	-	C
5454	34	-	KR
6122	26	-	M,HG
6124	26	-	M,HG
61938	41	-	HG
6446	39	-	HG
658	37	-	HG
7730	27	-	M,HG
8033	31	-	KR
8035	34	-	KR
8181	35	-	YQ
8182	35	-	YQ
8185	35	-	Y
8192	31	-	C
8252	35	-	Y
8253	35	-	Y
8300	27	-	HG

Item Code	Page	Row	Surface
8317	29	-	C
8341	27	-	M,HG
8369	28	-	HG
8433	27	-	S,HG
8501	27	-	M,HG
8557	32	-	S,HG
8558	32	-	S,HG
8559	32	-	HG
8782	27	-	M,HG
8839	28	-	HG
8886	31	-	C
9094	42	-	HG
91083	29	-	C
9211	34	-	CK
9407	40	-	HG
9408	39	-	HG
9409	39	-	HG
9521	31	-	ST
9842	28	-	HG
9885	28	-	M,HG

## FABRICS

Item Code	Page	Row	Surface
7039	45	A5	F
7318	45	B5	F
7721	45	A2	F
7722	45	B2	F
7733	45	B3	F
9337	45	A1	F
9338	45	B1	F
9339	44	B1	F
9444	45	A3	F
9445	45	A4	F
9446	45	B4	F
9532	44	A1	F

## METALLICS

Item Code	Page	Row	Surface
8006	47	A2	MT
8007	47	B1	MT
8008	47	C1	MT
8013	47	A1	MT
8107	47	B2	MT
8206	46	B1	MT
8207	46	A1	MT
8708	47	C2	MT

## BLACKS

Item Code	Page	Row	Surface
0909	48	A1	YC
0909	48	B1	C
0909	48	C1	SD
0909	48	D1	F
0909	48	E1	Y
0909	48	A2	L
0909	48	B2	SF
0909	48	C2	WNG
0909	48	D2	WNT
0909	48	E2	WD

## SOLID COLOURS

Item Code	Page	Row	Surface
0459	51	E2	M
0464	52	D3	M
0784	52	D2	M
0806	55	B2	S
0806	55	C2	M
0823	51	E3	M
0909	52	G1	M
0909	52	G2	HG
0912	55	A2	M
0927	54	A1	M
0928	54	E2	HG
0928	55	D1	S
0928	55	E1	M
BBM-0923	51	A2	HG
0933	51	B2	M
0933	51	C2	HG
0949	51	A1	M
0949	51	B1	HG
1097	54	E1	M
1104	52	D1	M
1107	52	A1	M
1107	52	A2	HG
1108	52	C1	M
1108	52	C2	HG
1109	54	A2	HG
1109	55	A1	M
1110	54	D2	HG
1110	55	B1	M
1112	57	A1	M
1113	57	B1	M
1115	57	E3	M
1117	56	A2	M
1118	56	B2	M
1120	56	M	M

Item Code	Page	Row	Surface
1122	55	C1	M
1200	51	D2	M
1200	54	B2	HG
1201	54	B1	M
1201	54	C2	HG
1206	56	B1	D
1207	57	E1	M
1207	57	F1	HG
1208	56	C1	M
1300	54	D1	M
1300	54	F2	HG
1301	54	G2	HG
1301	55	D2	M
1303	57	C1	M
1303	57	D1	HG
1307	57	C2	M
1308	57	D2	M
1311	56	G1	M
1312	56	D1	M,HG
1316	56	F1	M
1317	56	D2	S
1321	56	B3	M
1321	56	C3	HG
1322	56	E2	S
1325	56	D3	M
1329	52	B2	HG
1332	51	F3	M
1333	56	F2	S
1334	56	C2	M
1339	51	F1	M
1601	57	F3	M
1834	52	E1	M
2020	54	C1	M
2124	51	F2	M
2200	52	F1	M
2200	52	F2	HG
2770	52	F3	M
2774	52	B1	M
3001	57	B3	D
3200	51	C1	M
3200	51	D1	HG
3200	51	E1	S
5048	57	A2	M
5048	57	B2	HG
5342	52	E2	HG
5491	57	A3	D
7157	51	A3	HG
7157	51	B3	SD

Item Code	Page	Row	Surface
7197	51	C3	HG
7197	51	D3	M
7858	52	A3	M
7902	52	E3	M
7921	52	B3	M
7929	52	C3	M
8236	56	A3	M
8238	57	D3	M
8822	56	E1	M
8858	57	C3	M


## Texture Definition


<b>M:</b>	Matte Texture
<b>HG:</b>	High Gloss Texture
<b>NT:</b>	Natural Texture
<b>YS,NG:</b>	Natural Grain Texture
<b>ST:</b>	Stone Texture
<b>SW:</b>	Saw Texture
<b>WW:</b>	Wavy Wood Texture
<b>D:</b>	Smooth Texture
<b>YT:</b>	Matte Wood Texture
<b>S:</b>	Silky Smooth Texture
<b>CK:</b>	Prickly Texture
<b>KR:</b>	Sandy Texture
<b>BT:</b>	Burl Texture
<b>AC:</b>	Specific Collection (Random Texture)
<b>HN:</b>	Natural Honed Texture
<b>LM:</b>	Dry Grain Texture
<b>F:</b>	Fabric Texture
<b>CF:</b>	Rough Texture
<b>YA:</b>	Waviness Texture
<b>MT:</b>	Metallic Texture





"DRAW YOUR IMAGINATION"

 **Blackbone Masonry**

 **@blackbone**